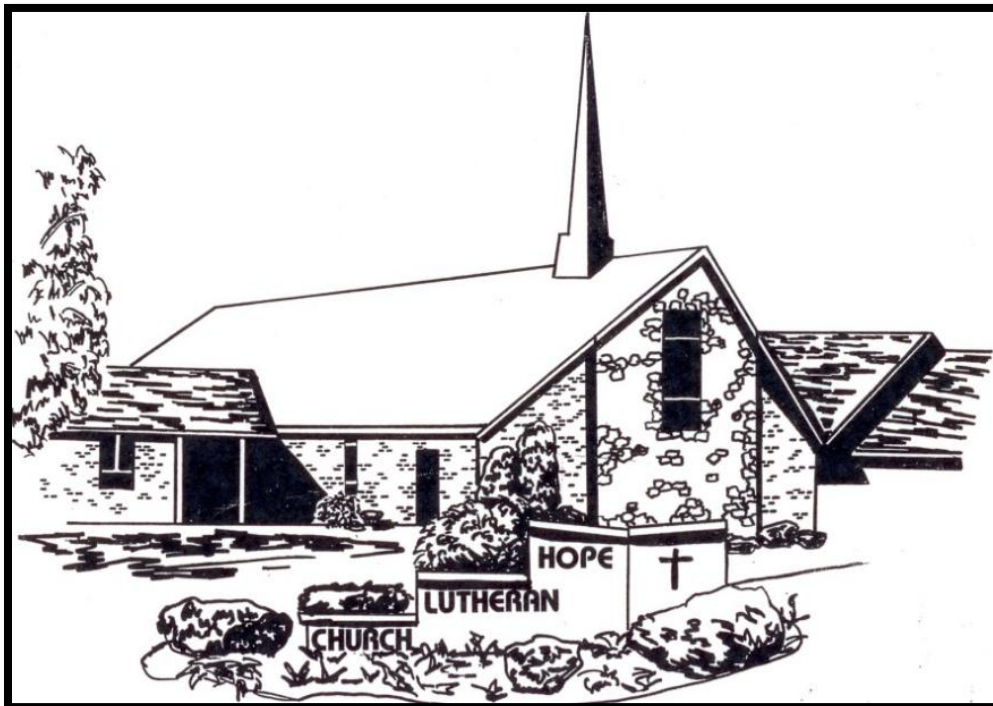


# HOPE HOME NEWS

Vol. XXXIX No. 12 December, 2012



***Published Monthly by:***

HOPE LUTHERAN CHURCH  
4131 LEHIGH DRIVE, P.O. BOX 1030  
CHERRYVILLE, PA 18035  
(610) 767-7203  
[www.hopecherryville.org](http://www.hopecherryville.org)

Sunday Worship at 8:00 AM and 10:30 AM  
Sunday Church School at 9:15 AM

***Church Office Hours***

Mon., Wed., Thurs., Fri. (7:30 AM – 4:00 PM)  
Tues. (9:00 AM – 2:00 PM)

## HOPE LEADERSHIP

### PASTOR

The Rev. Jami Possinger  
 pastor@hopecherryville.org  
 610-767-7203 ext.#12  
 610-799-2449 (h)



### CONGREGATIONAL COUNCIL MEMBERS

Wayne Weidner <i>President</i>	Linda Mery <i>Vice President</i>
Al Rock <i>Secretary</i>	Dennis Biechy
Kris Doncsecz	Tim Lockard
Tom Patterson	John Schuon
Bob Small	Christal Wrenn
John P. Zmyewski (Johnny)	John S. Zmyewski

### VISITATION PASTOR

The Rev. Jerry Mraz  
 610-440-3435 (h)  
 610-442-8156 (c)

### PASTOR EMERITUS

The Rev.  
 Clark W. Kuntz II

### DIRECTOR OF MUSIC

Mr. David R. Ziegler  
 organist@hopecherryville.org  
 610-767-7203 ext.#11

### SECRETARY

Mrs. Jane Tretiak  
 office@hopecherryville.org  
 610-767-7203 ext.#10

### COMMUNICATIONS SPECIALIST

Mr. Steven Shermetta  
 communications@hopecherryville.org

### BELL CHOIR DIRECTOR

Mrs. Janet Filchner  
 610-767-7203 ext.#40

### SEXTON

Mrs. Bonnie Zmyewski

### FINANCIAL SECRETARY

Mrs. Deb Gardner

### TREASURER

Mrs. Trudy Mertz

## CONTACT INFORMATION

For questions regarding New Membership, Baptisms, Funerals, Weddings, Change of Address, Van Requests, Worship Memorial Sponsors, Hospital Admissions, Room Reservations for Meetings or Social Events...

**Call the Church Office at (610) 767-7203**

REGARDING	CALL	PHONE. NO
Basket Com	Linda Sidor	610-767-8372
Boy Scouts	John Demczyszyn	610-767-7749
Church Website	Tom Perry	610-261-0743
Confirmation	Lynn LaBarre Pastor Jami	610-767-0880 610-767-7203
Cub Scouts	Lori Rehrig	610-261-4794
Evangelism	Sharyn Kratzer	610-261-1277
Finance	Bob Small	610-428-3231
Girl Scouts	Karen Zimmerman	610-760-1887
Hope Fest	Wayne Weidner	610-767-1512
Memorial Garden	Barry Ritter	610-428-2320
Mentor Leaders	Trish Ninos	610-261-4480
Mutual Ministry	Charlie Kutzler	610-262-4588
Nursery School	Deb Gable	610-767-7523
Prayer Shawl	JoAnne Creyer	610-262-3204
Property	Ralph Fisher	610-392-4985
SCS/Christian Ed	Lynn LaBarre	610-767-0880
Social Ministry	Marge Zimmerman	610-217-8324

Stewardship	Wayne Weidner	610-767-1512
VBS	Kathy Ziegler	610-262-9197
WELCA	Judy Dieter	610-767-9170
Worship Arts	Pastor Jami	610-767-7203
Worship & Music	Janet Filchner	610-262-5215
Youth Group	Steph Ziegler Stacey Ziegler	610-262-9197
Senior Center	Edith Knauss	610-767-2977
Tae Kwan Do	Rich Mullen	610-760-0958
Yard Sale	Ralph Fisher	610-392-4985

### OUR MISSION AT HOPE LUTHERAN CHURCH

***Our Mission as a congregation is... "To witness the love of God through both words and actions so that we may make others aware of God's claim on their lives and in doing so, seek to become more perfectly the Body of Christ in the world."***

## Greetings from the Pastor.....



Many of you have probably already seen the damage our church facility and parsonage sustained from Hurricane Sandy sweeping through the Lehigh Valley in November. If you haven't then I can let you know that there was extensive damage to the roofs of both facilities which will require quite a bit of work to restore. At the present time, we are waiting to hear from our insurance company about what costs they will cover.

As I walked around the building with the insurance adjuster surveying the mess which was covered with ugly tarps, I couldn't help thinking: "I hope it doesn't look like this for Christmas Eve." After all, that's one of our biggest holidays and we want to look our best! In our discussions the insurance adjuster told me that we wouldn't want to put on new shingles until the spring because the shingles need heat to seal properly and that can't happen in this cold weather. And, with those words, my fears were confirmed – we'll look like this for Christmas.

So that got me to thinking. Like many young people I went through a long stage of being, what I considered, an ugly duckling. You know what I mean – legs too long, hair too short, and whatever other inadequacies we are feeling at the time. I remember my mom saying those all too cliché words to me – "Honey, beauty is not about what you look like – beauty is what's inside of you." And, like any young person I brushed those words off. But as I looked at our facility those very same words came to mind!

Chances are we will be "under tarp" for the Christmas season. We won't be beautiful on the outside perhaps – but WE ARE beautiful inside. The welcoming people, the spirit-filled worship, the joyful children, the lovely decorations, the inspirational music, the family-oriented community, the miracle of Jesus birth cannot be eclipsed by some missing shingles!

Maybe Mary and Joseph felt the same about the stable where Jesus was born. It certainly wasn't a

comfortable room in the inn with fresh crisp linens and a warm hot meal. It was dark, sparse, cold, smelly and no place for the son of God to make his entrance. And yet, it was beautiful on the inside. The glow of a new mother's face, the pride of a new father's bearing, the cry of a newborn baby, the awe of the lowly shepherds, the brightness of the shining star, the alleluias of the angels, the miracle of God coming among us cannot be eclipsed by some musty outbuilding! Beauty is, after all, in the eye of the beholder!

So...this Christmas may you see beauty as you lovingly bake cookies with your family – as you gently place the star or angel on the top of your Christmas tree - as you thoughtfully wrap your presents for those you love – as you gratefully donate to the charity of your choice – as you patiently wait in line at the department store – as you merrily sing carols to the homebound – as you prayerfully lift up those who will not have what you have this Christmas – as you quietly pray for peace in this chaotic world – as you joyfully come to worship.

But, most of all, may you find beauty in the baby wrapped in swaddling clothes – the angels announcing his coming into the world – the shepherds witnessing and rejoicing – the light of the star leading us to the miracle – the words of the gospel writers sharing this incredible story. May you find beauty in knowing that we have a God who will go to any extent to let us know how much we are loved!

Christmas Blessings,  
*Pastor Jami*

## STEWARDSHIP CORNER

**"A Christmas Carol"**

*By Chick Lane*



As we approach the celebration of the birth of our Lord, I share with you a holiday story that is part of my family's tradition. It is a story that we try to see in a theater or on television every year.

***Continued on Page 4...***

Charles Dickens' A Christmas Carol is one of my favorite stewardship stories. It is a story of personal transformation and dramatic change in generosity. Through the visit of three ghosts, Ebenezer Scrooge is a changed person. Whereas the "old" Scrooge was a model of stinginess, the "new" Scrooge becomes committed to generosity.

At the beginning of the story Scrooge is very rich, very stingy and very miserable. Dickens describes Scrooge this way: "Oh! but he was a tight-fisted hand at the grindstone, Scrooge! a squeezing, wrenching, grasping, scraping, clutching, covetous sinner! Hard and sharp as flint, from which no steel had ever struck out generous fire, secret, and self-contained, and solitary as an oyster. The cold within him froze his old features ..." This Scrooge makes life miserable for his loyal clerk and greets any sort of kindness or cheer with a gruff, "Bah, humbug!"

Then came that fateful night when Scrooge was visited by three ghosts: the Ghosts of Christmas Past, Present and Future respectively. By the time the third visitor is gone, Scrooge is so startled, so utterly scared by the prospect of his future if his present course is unchanged, that Scrooge is changed. But not just changed, he is transformed.

When Scrooge awakes, he has a conversation with himself during which he says, "I am as light as a feather, I am as happy as an angel, I am as merry as a schoolboy. I am as giddy as a drunken man. A merry Christmas to everybody!"

Scrooge then makes the necessary arrangements to send the largest turkey he has ever seen to his clerk, Bob Cratchit. He hires a lad to buy and deliver the turkey and he hires a cab to take them there (for the turkey is simply too large to carry).

Dickens then says this of Scrooge: "The chuckle with which he said this, and the chuckle with which he paid for the turkey, and the chuckle with which he paid for the cab, and the chuckle with which he recompensed the boy, were only to be exceeded by the chuckle with which he sat down breathless in his chair again and chuckled till he cried."

Quite a transformation! He went from solitary as an oyster to chuckling until he cried. Scrooge's story in many ways is our story-with one huge difference. We have not been transformed by three Christmas ghosts. We have been transformed instead by the incredible Good News of Jesus born in a stable. We are so transformed that we can be bold enough to be as giddy and as generous as Scrooge. And when we are, may we find ourselves chuckling until we cry with joy at what God has done for us and for how God has allowed us to have a role in doing God's work in the world.

There is a stewardship story in Scrooge's story! May it fill you with joy this season.



### **PASTORAL ACTS**

*Pastor Jami Possinger officiated at the following pastoral acts.*

#### ***HOLY BAPTISMS***

**Derian Nicholas Berger** was baptized on Sunday, November 4, 2012 during the 10:30 AM worship service. Derian is the son of Kyle and Robin (Cunfer) Berger. He was born on July 11, 2011.

**Ashlyn LaRue Borger** was baptized on Sunday, November 11, 2012 during the 10:30 AM worship service. Aslyn is the daughter of Jay and Alyce (Rock) Borger. She was born on October 2, 2012.

***Please welcome Derian and Aslyn into our church family at Hope and pray for their growth in faith.***

#### ***MARRIAGE***

**Courtney Raye Wisniewski and Douglas William Burner** exchanged marriage vows on Saturday, November 3, 2012 at Hope Lutheran Church.

***Congratulations to Courtney and Douglas and please pray that they will always remember the vows made before God on their very special day.***





### 2012 OFFERINGS



Please “catch up” with your 2012 commitment or “intended” giving by the end of December or give an extra gift before the end of the year. Let’s keep Hope’s

ministries STRONG!! THANK YOU! 2012 OFFERINGS must be received or postmarked on or before December 31, 2012 to receive credit for 2012. Any offerings received after January 1, 2013 MUST be credited as 2013 contributions.

### FLOWER CHART

Our new flower chart for 2013 will be posted on the bulletin board in the narthex very soon. Two sponsors (**and only two**) are needed each week, at a cost of **\$15.00 per sponsor**.



Sponsor envelopes are next to the chart, the sponsor money and the envelope is due in the church office two weeks before the sponsorship. A special thank you to Sis Livermon for making our flower chart.

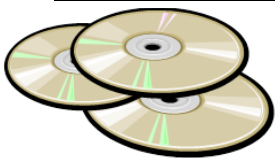
### BULLETIN CHART

Our bulletin chart for 2013 will soon be posted on the narthex bulletin board. Three sponsors needed per week at a cost of \$6.00 per sponsor. Thank you to Nancy Creyer for making our bulletin chart.

### PRESS CHART

Our press sponsor chart for 2013 will be posted on the narthex bulletin board shortly. One sponsor is needed per week at a cost of \$6.00 per sponsor.

### WORSHIP CDs FOR HOMEBOUND MEMBERS



Every Sunday volunteers record our worship services and put them on CDs for our homebound members. If you

are unable to get to church for any reason and would like a CD copy of the weekly service, please contact the church office. We also have small “boom boxes” to borrow if you need something on which to play the audio CD. We will make arrangements to get the CDs to you!

### 2012 ANNUAL REPORTS DUE BY JANUARY 15, 2013



Each group or committee meeting at Hope Church is expected to submit an Annual Report by January 15<sup>th</sup>. The report should be submitted on an 8 ½ x 11

inch sheet of paper and should include past accomplishments and future goals. (The BEST way to submit your report is by email. Please send it to Jane in the church office at [office@hopecherryville.org](mailto:office@hopecherryville.org)).

### CATECHETICAL CLASSES AND MENTOR UPDATE

#### **LEVEL I COMING UP-**

✧ Sunday, December 2<sup>nd</sup> – Visit to First Baptist Church

✧ Saturday, January 13<sup>th</sup> – Mentor Breakfast

#### **LEVEL II COMING UP –**

✧ Sunday, December 2<sup>nd</sup> – Visit to St. Nicholas Catholic Church

✧ Saturday, December 15<sup>th</sup> – Volunteer at Food Bank with Mentors

✧ Saturday, February 2<sup>nd</sup> – Pizza/game night with Mentors

*A great Outreach event during December is Decorating/Caroling on Saturday, December 22<sup>nd</sup>. There are also extra worship services during December- Wednesdays at 7:00 PM and Christmas Eve.*

### CHRISTIAN EDUCATION NEWS

- Thanks to the teachers for creating new holiday ornaments for the church. Also, the children made beautiful nativity crafts that were on display at this year's event.
- The Sunday school holiday program is about the Meaning of the Candy Cane and will be on Sunday, December 16<sup>th</sup> at 6:00 PM with snacks in Kuntz Hall following the program-snow date Sunday, December 23<sup>rd</sup>.
- The next Christian Ed Meeting will be January 21, 2013 at 7:00 PM at the church. Learning Ministries Day will be held at St. John's in Boyertown on January 26, 2013. We hope to have several members of our church attending this educational event.

## 2012 SUNDAY CHURCH SCHOOL TAX STATEMENTS

Statements to be used for income tax purposes will be given only to those who request them. Please complete the information below and have your child give this form with their offering, or phone Nancy Creyer at (610) 767-8942 (leave message). Statements will be completed in January of 2013.

NAME(S) \_\_\_\_\_

ENVELOPE  
NUMBER \_\_\_\_\_

## CHRISTMAS INGATHERING

The annual Christmas Ingathering of Northern Lehigh Valley Mission District will be held on **Thursday, December 6, 2012 at Union Lutheran Church, 5500 Route 873, Schnecksville, PA.** Packing of stockings and wrapping of gifts will begin at 1:00 PM. We will leave Hope Church at 12:15 PM. There will be an afternoon session only. The Ingathering will close with a Service of Dedication. **VOLUNTEERS ARE NEEDED!!** The ingathering provides gifts for people in area institutions. We will be packing the items on Wednesday, December 5, 2012 beginning at 6:30 PM here at Hope Lutheran Church. ALL are welcome to come and help. Confirmands...this would be a great outreach event! Large cardboard boxes would also be helpful!

## CHRISTMAS PROGRAM

Our annual Christmas Program will be held on Sunday, December 16<sup>th</sup> at 6:00 PM. There will be refreshments after the program in Kuntz Hall. There will be refreshments after the program in Kuntz Hall. Any donations of finger food items would greatly be appreciated. They can be dropped off in Kuntz Hall up to the start of the program.



## POINSETTIAS FOR CHRISTMAS EVE

The Senior Choir is selling poinsettias for Christmas Eve. The deadline to order your poinsettias is Sunday, December 9<sup>th</sup>. Please see the order form insert.



## JESSE TREE FOR ADVENT

Each day during Advent a volunteer places a symbol on the Jesse Tree in the Narthex. The symbol represents one of the Bible Stories, which leads to the birth of Jesus. A scripture and prayer are included on the back of each symbol for a brief devotion before placing the symbol on the macramé tree. If you can help with this, please sign the list in the narthex.

## WEDNESDAY EVENING ADVENT WORSHIP



We will prepare for the Christmas season with an additional opportunity for weekly worship – Wednesday evenings at 7:00 PM on, December 5, 12, & 19. Our worship will be approximately 30 minutes and will use the beautiful contemporary setting of Holden Evening Prayer. Please come and join us on Wednesdays during Advent.

## DECK THE WALLS WEEKEND

Come and help decorate our church on Saturday, December 22<sup>nd</sup>! Those that are interested should arrive at the church at 2:30 PM. Decorating will be followed by a soup dinner at 4:00 PM and caroling to homebound members at 5:00 PM. All are invited to bring a batch of your favorite soup to share. ***\*Catechetical Students – this would count as a social ministry/outreach event!***



## WREATHS FOR SALE TO DECORATE HOPE CHURCH

On Saturday, December 22<sup>nd</sup>, when we decorate Hope for the holiday season, wreaths will be hung. Anyone wishing to sponsor a wreath in honor of or in memory of a loved one is asked to call the church office at (610) 767-7203.



### CHRISTMAS CAROLING

All ages are invited to go caroling on **Saturday night, December 22<sup>nd</sup> following the soup supper at approximately 5:00 PM.** We go visit as many homebound members as possible. The homebound members especially like to see the children caroling.

**\*Catechetical Students – this would count as a social ministry/outreach event!**

### CHRISTMAS EVE SERVICES

**4:00 PM and 6:00 PM** - A family/young children service of Candlelight, Carols and Communion. This service will feature our Junior Choir.

**8:30 PM and 11:00 PM** - The Festival Communion Service with Candlelight and Carols. Special music by our Youth and Senior Choirs and Hope's orchestra.

### SPECIAL CHRISTMAS WORSHIP SERVICE

Christmas Communion Worship for our shut-in members and members unable to get to a Christmas Eve service will be held at 11:00 AM on **Wednesday, December 19<sup>th</sup>**. A light luncheon will follow. Please call the church office if you need a ride.

### REMINDER TO POINSETTIA SPONSORS

It is appreciated if all plants could remain in the sanctuary for all four Christmas Eve services. Plants may be taken after the **11:00 PM** Christmas Eve worship service. Thank you!

### ALTAR GUILD

Again this year we will be having 4 worship services on Christmas Eve; 4:00 PM, 6:00 PM, 8:30 PM and **11:00 PM (please note time change for the last**



### ALTAR GUILD

**worship service).** We could use 2 to 3 people to help our altar guild for each service. The volunteers for the altar guild will help fill the candles with liquid wax and straighten up the pews for the following service. Please call the church office at (610) 767-7203 if you can help or look for a sign-up sheet to be posted shortly. Thank you.

### CHRISTMAS EVE CHURCH NURSERY

The nursery will be open for all of the worship services on Christmas Eve; however the nursery will **not** be staffed. If you feel your child needs a little break from any of the services, please feel free to use the nursery as long as needed. Thank you!

### CHRISTMAS EVE CANDLES WITH RED FRILLS

Again this year we are making red frills for Christmas Eve candles. If you can help, kits will be available in the narthex shortly. **Please return completed candles no later than Sunday, December 16<sup>th</sup>.**

### AFTER CHRISTMAS CLEAN-UP

Please come out on Wednesday, December 26<sup>th</sup> at 8:00 AM to help clean up the church and also put some of the Christmas decorations away. Any help would be greatly appreciated.

### DID YOU RECEIVE HOLY COMMUNION THIS YEAR?



Did you complete the hospitality pad this year indicating you received Holy Communion? Please complete the

Hope Hospitality pad next time you receive communion (if you didn't or you're not sure). Our constitution requires active members to receive communion regularly.

### IS THERE CHURCH?

If the weather is extremely bad on any given Sunday or Wednesday this winter, and you are wondering if Sunday Church School or worship services are cancelled, please check the website [www.hopecherryville.org](http://www.hopecherryville.org), call our church office (610) 767-7203, or listen to the radio station WAEB (AM 790).



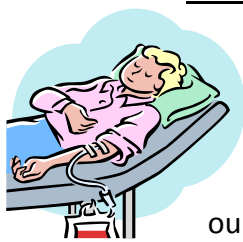
### BASKET COMMITTEE NEWS

**Welcome to the Basket Committee, Jennifer Laury!** We look forward to working with you at the Spring Social (4/12/13). Members: Please remember to mark April 12<sup>th</sup> on your 2013 calendars & remind your family and friends, as well!

**MEMORIAL GARDEN - "AN ETERNAL GARDEN OF HOPE"**

A number of people have asked about the progress on the Memorial Garden. The good news is that after obtaining all of the proper permits needed we are ready to begin construction of the Memorial Garden. However, there was concern about pouring concrete in the colder weather and the chance of bad weather and upcoming winter conditions delaying the completion of the garden as well. At their last meeting the Memorial Garden Committee voted to begin the construction in the spring when the weather breaks. In the meantime, if you are interested in pre-planning, the cost of the interment of cremains is \$1000.00. Purchase agreements and authorization for engraving forms are available in the church office or on the website at [www.hopecherryville.org](http://www.hopecherryville.org). And if you desire to give a memorial gift or a donation to the Hope Lutheran Church Memorial Garden or have questions please contact the church office at (610) 767-7203.

**RECENT BLOOD DONORS**



The following members of Hope Lutheran Church have recently donated blood: Laurie Christma, Rodney Christman, Paul Mishko, and Stanley Royer. Thank you to our faithful blood donors. If you

would like to give the gift of life, please call the Miller Blood Center at (610) 691-5850. **Donor Group Activity Report (Hope Lutheran Church):**

Annual Donation Goal	<b>36</b>
Number of Donations as of September 2012	<b>80</b>
Number of Donations for October 2012	<b>4</b>
Number of Donations YTD (2012)	<b>84</b>
Number of Donations to Reach Goal	<b>0</b>

**THANK YOU NOTES**

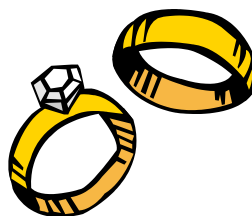
Thank you to all members who sponsored my Halloween Walk end of October in support of The Northampton Area Food Bank. Thirty-eight people of all ages (and some dogs), walked that Saturday and raised a total of \$2,434! WOW!!! I'm proud to have been part of the festivities and look forward to another 4.5K next year.

**Linda Sidor**

Thank you to Pastor Jami for the prayers and visits before my surgery and also while I was a patient in the Lehighton Hospital and the Lehighton Rehab. Thank you to Pastor Mraz for bringing me communion at home and thank you for the beautiful rose prayer shawl I received, I took it to the hospital and everyone wanted to know all about it. Thank you also for the meals that were made for me, they were delicious and very much appreciated. Thank you for all the cards and calls I received from my sisters and brothers at Hope. Thank you for all the people who took me to my doctor's appointments when I couldn't drive but thank you mostly for the prayers that were said to the Lord on my behalf. Love and God Bless each and every one of you.

**Georgia Mohrey**

**MARRIAGE PREPARATION**



All members of Hope Lutheran Church planning a wedding in the coming year(s) are encouraged to attend the **Marriage Preparedness Workshops** offered through

Lutheran Congregational Services. More information and a schedule for 2013 are available from the church office or by calling Lutheran Congregational Services at (610) 770-9205. Also, please let the church office know of your marriage date as soon as you decide and make an appointment to speak with Pastor Jami.

**HOPE LUTHERAN NURSERY SCHOOL**

The Hope Lutheran Church Nursery School is now accepting applications for next year (2013-2014). The school's structured learning environment



helps to prepare the children for their formal school experiences. Activities include: music, crafts, gym, painting, language arts, field trips and much more. Please call Debbie Gable at (610) 767-7523 for more information or to register your child for Nursery School. Your child must be either 3 or 4 years of age by September 1<sup>st</sup> in order to register.



### NEWSLETTER CHANGES



Beginning January 2013, the United States Postal Service will have new guidelines in place for nonprofit, bulk-mail postage rates. The biggest change will be a page limit for our monthly newsletters. Our mailings must be limited to a total of 6 (8 ½ x 11 inch.) pages per copy. These changes will have a direct effect on what we are able to include in the newsletter. Some tough decisions will have to be made on the types of information that will be deemed as “necessary” each month. The staff has been working on new ways to ensure the consequences of these changes are minimal. Our goal is to alleviate our dependency on printed hard-copies of the newsletter by emailing it through Constant Contact. Those that receive the newsletter via email **WILL NOT** see any changes to the content or format in January. We appreciate your understanding.

**Steve Shermetta**

***Communications Specialist***

### NEWSLETTERS VIA EMAIL



If you and your family would like to receive the monthly newsletter via email and **discontinue** receiving it via a printed hard-copy through the mail, please let me know by sending me an email

at [communicaitons@hopecherryville.org](mailto:communicaitons@hopecherryville.org)

### PLEASE CHECK YOUR EMAIL

Constant Contact has proven to be a wonderful tool that allows us to better communicate information within the church and community. This is just a friendly reminder asking that all Hope Lutheran Church members try to check their email on a weekly basis. Checking your email regularly will increase the successful exchange of information regarding church news, meetings, and events.



### SYNOD NEWS

If you would like to read the SYNOD News for the month of December, please visit [http://www.godslove.org/publications/synod\\_news.htm](http://www.godslove.org/publications/synod_news.htm) and select *December 2012*.

### PRAYER SCARVES FOR COLLEGE STUDENTS



Attention all parents of college students... Hope's Prayer Shawl Ministry is currently knitting and crocheting scarves for all of our college students. It's a surprise! We plan to ship them out when the weather gets cold – letting our students know that we continue to pray for them as they study. Here's how you can help...please call (610) 767-7203 or email the church office ([office@hopecherryville.org](mailto:office@hopecherryville.org)) and give us your child's address. We will be sending to all students in college, trade or technical schools and community colleges. If your child is living at home and commuting we need to know that as well. Please let us know as soon as possible so we make enough for everyone!

### INDIANLAND GARDEN CLUB

We are nearing the end of 2012 and it was a very busy and successful year for the garden club. Many new members were welcomed into the club this year; various members' and non-members' gardens were open for visitor tours throughout the growing season; and there were special group tours offered to various sites throughout the year. Interesting programs and special speakers were presented to the membership at regular monthly meetings and meetings were well attended. In December, members will travel to the Prime Restaurant for a holiday dinner and Christmas party. There will be no regular monthly meetings from December through February. Regular monthly meetings will resume in March of 2013 at Hope Lutheran Church. Details will be announced. If you enjoy gardening and are interested in joining the Indianland Garden Club in the new year, call (610) 767-8420 for more information.



### **LEHIGH TOWNSHIP HISTORICAL SOCIETY**

Recently, Dr. Marcia Falconer, a resident of Canada, presented 3 binders of tax lists of Lehigh Township for the years, 1761 to 1789, to LT Historical Society. She and her sister, Ardis Grosjean, of Sweden, are members of LT Historical Society and are descendants of the Dreisbach family. The Dreisbachs were very early settlers in Lehigh Township. Dr. Falconer researched all of the information and it is probably the most complete tax listing available for Lehigh Township from 1761 to 1789. The tax lists contain much more than tax information. There is information which included total acreage, cultivated acres, number of horses, cows and sheep, grist mills, oil mills, servants, and trades. These records will be useful to anyone doing genealogy or historical research and will be preserved by the historical society. Interested visitors are welcome to examine these old records. The society is grateful for this contribution of information which will be on hand with other memorabilia in the LT Historical Centre in Pennsville. The LT Historical Centre will be open on Sunday, December 2nd and 16th, from 1:00 to 4:00 PM, for holiday visitors and shoppers. If you need a unique gift for the holiday, keep the society's unique items in mind for gifts. Following the December Open House dates, the historical centre will be closed until spring of 2013 except by appointments. We thank you for your support throughout 2012. For more information, contact Ken at (610) 767-5989.

### **LEAVE A LEGACY FOR MINISTRY AND MISSION**

Have you ever considered continuing your annual support to your congregation and other church ministries after you joined the Church Triumphant. With a Memorial Endowment Fund, you can make quarterly distributions to your congregations and other ministries in perpetuity or even longer. For more information about how to make charitable gifts using a Memorial Endowment Fund or other ways to make charitable gifts to your favorite church ministries, call Pr. Greg Kramer at the Lutheran Planned Giving Office at 570-374-2044 or call the ELCA Foundation, 800/638-3522, ext. 2970 or visit our website at [www.elca.org/fo](http://www.elca.org/fo).

### **NOVEMBER 2012 COUNCIL HIGHLIGHTS**

- ✚ Council reviewed the proposed budget and recommended that it be presented to the congregation at the annual meeting on November 11<sup>th</sup>
- ✚ Pastor Paulette Obrecht will begin her ministry at Hope on December 1<sup>st</sup>, 2012.
- ✚ The insurance adjuster viewed the damage to the church property and the parsonage which was a result of Hurricane Sandy. There is extensive damage to both the roof on the parsonage and the church as well as some interior water marks to the sanctuary. Next step is to hear from the insurance company as to what they will cover.
- ✚ Council responded to a request from one of our young adult members, Jennifer LaBarre, for some financial assistance to attend a medical missionary trip to Guatemala in January 2013. Jen is working on other avenues of funding and council voted to provide a "scholarship" to help her achieve this goal.
- ✚ Worship and Music Committee announced that there is a change in the Advent worship. This year we will be having mid-week Advent services on Wednesday evenings at 7:00 PM – the same time we have our mid-week Lenten services.
- ✚ The Memorial Garden permits are all in and construction can begin at any time. The Memorial Garden committee will make a decision on the start date for this project.
- ✚ The Pictorial Directory is on schedule. Additional photography dates had to be added to accommodate the number of members requesting appointments.
- ✚ The Youth Group raised over \$600.00 from their Pork and Sauerkraut dinner which was held on November 4<sup>th</sup>. The money will be given to the "kitchen renovation fund." Council thanks the youth for their support of this project.
- ✚ Wayne Weidner requested approval to begin to gather a group to do some disaster relief work in response to Hurricane Sandy. He will contact Emmanuel Lutheran church to see if they are interested in partnering with Hope to do some relief work. Look for additional information in the bulletin and future newsletters.

**DECEMBER 2012 PRAYER LIST**

**WORSHIP SCHEDULE – DECEMBER 2012**

**12/1/12** Sheri, Brandon, Logan Christman and family  
**12/2/12** Miriam Burbes  
**12/3/12** Debra Brookfield and family  
**12/4/12** Louise Beers and family  
**12/5/12** Timothy, Marjorie, Paige Beil and family  
**12/6/12** Robert, Dolores Brown and family  
**12/7/12** Rudy, Judy Christman and family  
**12/8/12** Nancy Creyer and family  
**12/9/12** Lee, JoAnne Creyer and family  
**12/10/12** Larry, Kathleen Creyer and family  
**12/11/12** Peter, Brenda, Erica Chandick and family  
**12/12/12** Richard, Gloria Cole and family  
**12/13/12** Francis, Holly , Nikolas, Ryan Carr, Hailee Bloch and family  
**12/14/12** Mark, Tracie, Heather, Ryan, Brooke Conway and family  
**12/15/12** Michelle, Maya, Brandon Costanzo and family  
**12/16/12** David, Judith Chase and family  
**12/17/12** Rodney, Laurie, Rodney Jr., William Christman and family  
**12/18/12** Craig, Mary, Nathaniel, Leana Carvin and family  
**12/19/12** Andrew, Jordan, Morgan, Haydan, Chandler and family  
**12/20/12** Edward Cherry and family  
**12/21/12** Kimberlee, Taylor, Nicholas Dotter and family.  
**12/22/12** Vincent, Judy Dieter and family  
**12/23/12** Barbara Duraso and family  
**12/24/12** Richard, Susan Demko and family  
**12/25/12** Happy Birthday Jesus!  
**12/26/12** Ralph Derhammer and family  
**12/27/12** Marian Druckenmiller and family  
**12/28/12** Lisa Deutsch, Jason, Damian Blose and family  
**12/29/12** Karen Derr and family  
**12/30/12** Greg, Tammy, Janelle, Jordan Demko and family  
**12/31/12** Doug, Leslie Daniel, Cassandra, Brittany Muthard and family

<p><b><u>Sunday, December 2, 2012</u></b>                  8:00 AM Holy Communion                  9:15 AM Sunday School                  10:30 AM Service of the Word</p>
<p><b><u>Wednesday, December 5, 2012</u></b>                  7:00 PM Mid-week Advent Worship</p>
<p><b><u>Sunday, December 9, 2012</u></b>                  8:00 AM Service of the Word                  9:15 AM Sunday School                  10:30 AM Holy Communion</p>
<p><b><u>Wednesday, December 12, 2012</u></b>                  7:00 PM Mid-Week Advent Worship</p>
<p><b><u>Sunday, December 16, 2012</u></b>                  8:00 AM Holy Communion                  9:15 AM Sunday School                  10:30 AM Service of the Word                  6:00 PM Sunday School Christmas Program</p>
<p><b><u>Wednesday, December 19, 2012</u></b>                  7:00 PM Mid-week Advent Worship</p>
<p><b><u>Sunday, December 23, 2012</u></b>                  8:00 AM Service of the Word                  9:15 AM Sunday School                  10:30 AM Holy Communion</p>
<p><b><u>Monday, December 24, 2012</u></b>  <i>Christmas Eve</i>                  4:00 PM Christmas Eve Worship                  6:00 PM Christmas Eve Worship                  8:30 PM Christmas Eve Worship                  11:00 PM Christmas Eve Worship</p>
<p><b><u>Sunday, December 30, 2012</u></b>  <i>No Sunday School</i>                  8:00 AM Holy Communion                  10:30 AM Holy Communion</p>





**FINANCIAL REPORT - OCTOBER 31, 2012**

	YEAR 2012		YEAR 2011	
<b>REGULAR FUND</b>				
Equity Beginning of Year		\$ 51,591.04		\$ 6,895.69
Income - October	\$ 25,348.31		\$ 28,120.35	
Income - Jan.-Sept.	261,554.47		241,025.51	
Total Income	286,902.78		269,145.86	
Expenses - October	28,466.76		27,499.44	
Expenses - Jan.-Sept.	243,088.92		222,954.94	
Total Expenses	271,555.68		250,454.38	
Net Income		15,347.10		18,691.48
<b>SPECIAL APPEALS</b>				
Income - October	188.60		473.00	
Income - Jan.-Sept.	14,633.92		14,009.58	
Total Income	14,822.52		14,482.58	
Expenses - October	173.60		358.00	
Expenses - Jan.-Sept.	14,313.92		13,630.58	
Total Expenses	14,487.52		13,988.58	
Net Special Appeals		335.00		494.00
Equity End of October		\$ 67,273.14		\$ 26,081.17
<b>BUILDING FUND</b>				
Equity Beginning of Year		\$ 129,840.65		\$ 100,974.91
Income - October	\$ 9,932.02		\$ 3,640.64	
Income - Jan.-Sept.	35,800.85		28,571.82	
Total Income	45,732.87		32,212.46	
Expenses - October	9,695.17		799.79	
Expenses - Jan.-Sept.	44,510.11		6,606.02	
Total Expenses	54,205.28		7,405.81	
Net Income		(8,472.41)		24,806.65
Equity End of October		\$ 121,368.24		\$ 125,781.56
<b>MEMORIAL FUND</b>				
Equity Beginning of Year		\$ 88,274.75		\$ 77,040.44
Equity End of October		\$ 77,541.07		\$ 87,117.96
<b>SCHOLARSHIP LOAN/CAP IMP FUND</b>				
Equity Beginning of Year		\$ 84,119.44		\$ 88,786.77
Equity End of October		\$ 96,725.77		\$ 84,119.44

**SUMMARY:**

Expenses exceeded income in the Regular Fund for the month of October by \$3,118.45, and for the year 2012, income exceeded expenses by \$15,347.10, giving us a current balance in the Regular Fund of \$67,273.14. Last year the net income for the same period was \$18,691.48 with a balance of \$26,081.17.

Budget Comparison--Total Regular Fund Budget for 2012 is \$373,622.00. 44/53 of that figure is \$310,176.75. Our receipts in the Regular Fund for the ten months were \$286,902.78. So, we are behind budget by \$23,273.97.



### NEWSLETTER SCHEDULE

All committees, groups and persons submitting information for the church newsletter should follow the schedule listed below. These dates are subject to change.

<u>Edition</u>	<u>Article Deadline</u>	<u>Collation Date</u>
January	Friday, December 21	Thursday, December 27
February	Monday, January 21	Thursday, January 24
March	Monday, February 18	Thursday, February 21

Please email your articles to Steve Shermetta ([communications@hopecherryville.org](mailto:communications@hopecherryville.org)) by **12:00 PM** on the deadline date. Thank You

### READING THROUGH THE BIBLE IN A YEAR

If you wish to strengthen your daily faith, here is a plan to read through the Bible in one year (Continued). These are the readings for the month of December.

	<b>Sunday <i>Epistles</i></b>	<b>Monday <i>The Law</i></b>	<b>Tuesday <i>History</i></b>	<b>Wednesday <i>Psalms</i></b>	<b>Thursday <i>Poetry</i></b>	<b>Friday <i>Prophecy</i></b>	<b>Saturday <i>Gospels</i></b>
Dec. 1							John 10-12
Dec. 2 – 8	II Timothy 3-4	Numbers 13-16	I Chronicles 20-24	Psalms 105-107	Proverbs 22	Joel	John 13-15
Dec. 9 – 15	Titus	Numbers 17-20	I Chronicles 25-29	Psalms 108-110	Proverbs 23-24	Amos 1-4	John 16-18
Dec. 16 – 22	Philemon	Numbers 21-24	II Chronicles 1-5	Psalms 111-113	Proverbs 25	Amos 5-9	John 19-21
Dec. 23 – 29	Hebrews 1-4	Numbers 25-28	II Chronicles 6-10	Psalms 114-116	Proverbs 26-27	Obadiah	Acts 1-2
Dec. 30 – 31	Hebrews 5-7	Numbers 29-32					

### A LOOK AHEAD



<b>December 2012</b>	
<b><i>Christmas Program</i></b> Sunday, December 16, 2012 6:00 PM Hope Lutheran Church (Kuntz Hall)	<b><i>Deck the Walls Weekend</i></b> Saturday, December 22, 2012 2:30 PM Church Decorating 4:00 Soup Dinner 5:00 PM Caroling to Homebound Members
<b>January 2013</b>	
<b><i>Evangelism's Come Back to Church Sunday</i></b> Sunday, January 13, 2012 Both Services (Hope Lutheran Church)	
<b>February 2013</b>	
<b><i>Bishop to Preach/Reception</i></b> Sunday, February 17, 2013 Both Services (Hope Lutheran Church)	