

# HOPE HOME NEWS

Vol. XLI N<sup>o</sup> 5 May 2014



***Published Monthly by:***

HOPE LUTHERAN CHURCH  
4131 Lehigh Drive, P.O. Box 1030  
Cherryville, PA 18035  
610-767-7203  
[hopecherryville.org](http://hopecherryville.org)

***Worship Hours***

Sunday Worship at 8:00 AM and 10:30 AM

***Church Office Hours***

Mon., Wed., Thurs. and Fri.: 7:30 AM – 4:00 PM  
Tues.: 9:00 AM – 3:00 PM

FINANCIAL SUMMARY - MARCH 31, 2014					
	Regular	Building	Memorial	Scholarship Loan	Memorial Garden
<b>Balance Beginning of Year</b>	\$ 76,661.59	\$ 83,981.26	\$ 90,833.11	\$ 103,109.55	\$ (13,046.92)
Income - March	37,083.93	2,645.09	577.07	-	-
Income - Jan.-Feb.	48,971.09	6,083.37	4,075.07	5,299.82	-
Total Income	86,055.02	8,728.46	4,652.14	5,299.82	-
Expenses - March	33,799.44	832.86	-	-	-
Expenses - Jan.-Feb.	72,265.76	198.00	619.00	3,600.00	-
Total Expenses	106,065.20	1,030.86	619.00	3,600.00	-
Net Income	(20,010.18)	7,697.60	4,033.14	1,699.82	-
Net Special Appeals	973.43				
<b>Balance End of March</b>	<b>\$ 57,624.84</b>	<b>\$ 91,678.86</b>	<b>\$ 94,866.25</b>	<b>\$ 104,809.37</b>	<b>\$ (13,046.92)</b>
<b>SUMMARY:</b>					
Income exceeded expenses in the Regular Fund for the month of March by \$3,284.49, and for the year 2014, expenses exceeded income by \$20,010.18, giving us a current balance in the Regular Fund of \$57,624.84. Last year the net income for the same period was \$478.05 with a balance of \$89,168.66.					
Budget Comparison--Total Regular Fund Budget for 2014 is \$416,769.00. 13/52 of that figure is \$104,192.25. Our receipts in the Regular Fund for the three months were \$86,055.02. So, we are behind in income by \$18,137.23.					

*\*\* The current income statement is posted in the narthex.*

<b>NEWSLETTER SCHEDULE</b>		
All committees, groups and persons submitting information for the church newsletter should follow the schedule listed below. Your articles may be edited so we do not exceed the Post Office guidelines. Please email your articles to Nina Weiss ( <a href="mailto:communications@hopecherryville.org">communications@hopecherryville.org</a> ) by <b>12:00 PM</b> on the deadline date. Thank you.		
<b><u>Edition</u></b>	<b><u>Article Deadline</u></b>	<b><u>Collation Date (10:00AM start)</u></b>
June	Monday, May 19	Thursday, May 22
July	Monday, June 23	Thursday, June 26
August	Monday, July	Thursday, July

### **SYNOD NEWS**

The May 2014 issue of *Synod News* is available online. Visit [http://www.godslove.org/publications/synod\\_news.htm](http://www.godslove.org/publications/synod_news.htm) and select *May 2014*.



## **GREETINGS FROM THE PASTOR...**

*From Pastor Jami Possinger*



About three weeks before Easter, I sprained my left ankle. I was walking with some friends and my husband, Mitch, and I slipped off the shoulder of the road and fell. It was pretty painful and I've been wearing a brace ever since. I limped for the first three days or so but eventually was able to walk normally after that – even with the brace on. Of course... I can't fit into my most stylish shoes – but oh well! Now I say that because I'm guessing that most of you who saw me never realized that under my pant leg was a brace to support my ankle. And that got me thinking...

On the outside most of us look relatively good – normal – put together, as they say. We come into worship on a Sunday morning and look around and think: "this is a place where most people are problem free – their lives are going pretty well." And that's because we can't see the brace that is under their pant leg. Or, more correctly, on the outside we are holding it all together but inside many of us are worried, depressed, stressed, hopeless and on and on.

Truth is... we are all, at some points in our lives, hurting and struggling but people just don't know it. Truth is... worship on any given Sunday morning is really a hospital for wounded people – all coming together for hope and healing – looking for joy in the midst of our pain and strength when we feel we can't go on – hearing the word of God – singing familiar hymns – praying together – so we can face the world again as we leave.

So next time you enter the sanctuary look around you and take time to pray for the person who sits next to you in the pew, the members of the choir, the children who come for the children's message, those whose eyes tear up during a hymn, the members who have lost loved ones, the people who may look frail and those who look strong. Pray for the staff and the worship leaders, the Sunday school teachers and our homebound members. Because you see... we all need each other. We all need those prayers. We are not as put together as we look. We are all wearing a brace under our pant legs!

Easter blessings,  
Pastor Jami

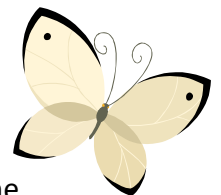
---

## **ASSISTANT PASTOR'S WORD...**

*From Pastor Paulette Obrecht*

It occurred to me that May is the month of Mother's Day, and I have never written an article or a sermon about this special holiday. Believe it or not, Mother's Day was not invented by Hallmark.

It's a celebration that actually dates back to the Greeks and Romans and was usually part of the festivities of spring and new life and honored various "mother goddesses." Early Christians often celebrated a special day for mothers on the fourth Sunday of Lent by honoring the Virgin Mary, the mother of Christ. In the early 1600's this celebration was expanded to include all mothers – and the day was called "Mothering Sunday." In the U.S., the anti-slavery, anti-war activist Julia Ward Howe (writer of the "Battle Hymn of the Republic") lobbied for the celebration of a "Mother's Day of Peace" after so many mothers lost their sons in the Civil War. Her idea slowly spread, but was later replaced by a Mother's Day celebration in May – as suggested by a woman named Anna Jarvis, who is considered the founder of this holiday in the U.S.



When Anna's mother died in 1905, she worked hard to fulfill her mother's dream of having an official mother's day. So, every year, Anna placed carnations, her mother's favorite flower, in the church in West Virginia

where her mother had worshipped. She also lobbied to have an official declaration of Mother's Day. Then on May 8, 1914, President Woodrow Wilson designated the second Sunday in May as Mother's Day.

Today, Mother's Day is celebrated in many countries around the world, a day on which people pay tribute to their mothers and thank them for all their love and support. The day has become hugely popular – and also hugely commercialized – and it is a day on which phone lines witness maximum traffic.

My favorite mother in Bible stories is Hannah, the mother of the prophet Samuel. Every year when she and her husband Elkinah went to the temple at Shiloh to offer sacrifices, she prayed that she would finally be able to have a child. After many years, God answered her prayers – and when Samuel became 7 years old, she offered him back to God by letting him serve at that temple with the priest Eli. Each year, Hannah returned to the temple and brought a new cloak for Samuel and thanked God for her beautiful child. Samuel grew up to be a very famous prophet and judge of Israel and served God for the remainder of his long life.

I hope you all are able to take time on Mother's Day this year, Sunday, May 11<sup>th</sup>, to say a prayer of thanksgiving for your mother – and for those who serve as a mother to others.

*Blessed are the peacemakers, for they will be called children of God – [the Mother and Father of us all].*

- Matthew 5:9

---

#### **COUNCIL HIGHLIGHTS – APRIL 2014**

- ⤴ Council approved a request from the synod asking Hope to be the venue for the 2015 Synod-wide Learning Ministries Day on Saturday, January 24, 2015 from 8:00 AM to 4:00 PM.
- ⤴ On Sunday, May 4<sup>th</sup> from 9:15 AM – 10:15 AM the council members will host “Coffee with the Council.” This is an opportunity for members to meet with the council, have financial reports reviewed, ask questions, share concerns and – of course – have coffee and goodies!
- ⤴ The Mutual Ministry Committee submitted a Child Abuse Protection Policy for council to review. People working with youth will be required to submit to a Criminal Background check and Child Abuse History Clearance. This will include our Sunday morning Nursery volunteers, VBS, Sunday School, Youth Group, Confirmation mentors and youth activity chaperones. A reporting procedure for incidents was also reviewed.
- ⤴ The Evangelism Committee has scheduled a covered dish church picnic at Indian Trail Park. The date is Sunday, July 20<sup>th</sup> from 2:00 PM to 8:00 PM.
- ⤴ Level 2 Confirmation students, mentors and youth group members are holding a “Car Wash for a Cause” on Saturday, May 3<sup>rd</sup> from 8:30 AM to 2:30 PM. One half of the proceeds will go to the youth attending the ELCA National Youth Gathering in 2015 and one half will go to a social ministry “cause” the Level 2 students select.
- ⤴ Council approved a new date for the Vera Bradley fundraiser for the youth going to the ELCA National Youth Gathering. It will be held on Saturday, June 28<sup>th</sup>.
- ⤴ New member classes will be held on May 18<sup>th</sup>, 25<sup>th</sup> and June 1<sup>st</sup> from 9:15 – 10:15 AM in Kuntz Hall. New members will be received during both services on June 1<sup>st</sup>.
- ⤴ A male and a female delegate are needed for the 2014 Synod Assembly being held at Split Rock Resort from Friday, May 30<sup>th</sup> to Saturday May 31<sup>st</sup>. John P. Zmyewski volunteered to be the lay male delegate.
- ⤴ Council approved a gift of \$150.00 for the Lutheran Theological Seminary at Philadelphia's 150<sup>th</sup> anniversary.

## HOPE FEST

Mark your calendars for Hope Fest 2014, to be held RAIN OR SHINE on Friday, June 20<sup>th</sup> and Saturday, June 21<sup>st</sup>. Details in upcoming bulletins and newsletters!

**Eucharistic Ministers Meeting**  
**May 27<sup>th</sup> 5:30 PM**  
**Please RSVP to Pastor Paulette**

### RECENT BLOOD DONORS

The following members of Hope Lutheran Church donated blood in March – way to go! Jeffrey Barber, Kim Eckroth, Mary Hagley, Stanley Royer and Raymond Swinger. **We have 15 pints YTD on our goal of 32 – 17 to go.** *Miller Keystone is currently in need of all blood types.* If you would like to give the gift of life, please call the Miller Blood Center at 610-691-5850.



**MILLER-KEYSTONE**  
**BLOOD CENTER**

### MEMORIAL BLOOD DRIVE

On **Saturday, May 31, 2014 from 10:00 AM to 2:00 PM**, the Miller Keystone Blood Center personnel will be available to accept blood donations in Hope's Kuntz Hall for the **20<sup>th</sup> annual blood drive in loving memory of Doug Gable**. To help meet the need for blood products, it is important for everyone to seriously consider sharing this valuable gift. To make an appointment, please call Sharon at 610-760-9891. The blood donated that day will be credited to Hope Lutheran Church blood bank, which covers all members.



**This monthly feature explores Hope's "Hidden Gems," to focus on the happenings that might fly under the radar of members. Learn and grow in the many facets of Hope. Maybe find a gem of your own!**

### SOUP GROUP

Once a month, the smell of home cooking wafts down the hall, makes its way to the office and means one thing... soup day! The Soup Group of Hope Lutheran meets the first Wednesday of every month at 9:00 AM and if ministry has a smell, this is it.

Many years ago, a similar group from Hope met at a member's home, made soup, baked bread and delivered the meal to the homebound. They evolved into a group that came to be known as the "Banana Bunch" and existed as such for years. However, it disbanded when deliveries became a challenge.

The Soup Group is a group reborn as of October 2013. Currently, LeAnn Chandler is in charge of organizing the group. LeAnn says "Last summer, I felt there was a need to interact more with our homebound members, who enjoy fellowship and regular visits from members of the congregation. We hope that we will eventually be able to spend time at each person's home." The group serves about 40 homebound members in an average month. The conclusion of each cooking session brings the decision for next month's soup.

The Soup Group is completely self-funded, purchasing all the supplies themselves. They do accept monetary donations and gift cards, though. Recently, they were given 2 turkeys. The turkeys – and all the trimmings – were cooked and brought to a church in Bethlehem which provides a homeless shelter for women. The leftover turkey was used to make turkey pot pie soup. Another monetary donation was received in honor of a recent funeral.

In addition to soup, they include a bread item and a dessert or a homemade cookie, such as Dolores Reenock's special biscuits for St. Patrick's Day and Kathy Creyer's decorated Easter Eggs for the April delivery. Julie Sekol coordinates the deliveries and creates special labels. It's these personal touches as well as the soup that warm our homebound members' hearts.

This ministry will continue on a year round basis. If you know of a homebound member who would enjoy some soup and fellowship, please let LeAnn know. The goal is to keep these people involved with Hope Lutheran Church, to let them know they are thought of and cared for and to let them know that God loves them, too. In the future, the Soup Group would love to see our ministry expanded by providing meals to homeless shelters on a regular basis. Contact LeAnn Chandler at 610.44.0341 or [lachandler7759@hotmail.com](mailto:lachandler7759@hotmail.com) for more info.

### **SOUP GROUP**

The Soup Group will meet on **Wednesday, May 7 at 9:00 AM**. Soup will be delivered that day to our homebound members. All help is welcome, especially with delivering soup; call LeAnn Chandler at 610-440-0341 or merely show up that day.



### **STORY WEAVERS - DISCUSSION GROUP**

The StoryWeavers will meet on Tuesday, May 13 at 10:00 AM. Lunch will follow at the Ritz in Allentown. All are welcome to attend. For more information, please contact LeAnn Chandler at [lachandler7759@hotmail.com](mailto:lachandler7759@hotmail.com) or 610-440-0341 if you need the question for the month.

### **PASTORAL ACTS**

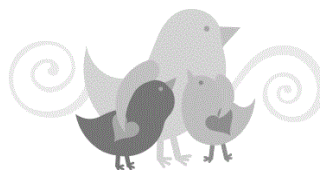
#### **FUNERALS**

**Theodore D. Foster Sr.** entered eternal life on April 2, 2014. Funeral services were held at Schisler Funeral Home.

***Our sympathy to family and friends of Theodore; may God continue to be their guide and strength.***

### **CHURCH SOFTBALL TEAM**

Any confirmed youth or adults (men and women) interested in playing in the church softball league should call Lou Ventura at 610-767-3724. Games are played on Sunday evenings beginning May 4<sup>th</sup>.



Happy Mother's Day

### WOMEN OF FAITH

The new "Women of Faith" group will meet on Monday, May 19, at 7:00 PM in the Conference Room. Invitations are being sent to the newest women members of the congregation to invite them to an evening of fellowship. Our topic for the evening will be ways to discern our spiritual gifts – and how we might put them to use. There is still plenty of time to sign up for the "Meals of Hope" project at Union Lutheran in Schnecksville on Saturday, June 14. The mission of this new group is to provide opportunities for fellowship, spiritual learning, and service for women of the church who work during the day or prefer to meet in the evening. All ages are invited to join us and bring your ideas for activities for the remainder of the year.

### SIXTH GRADE

Learn confirmation duties such as acolyte, crucifer and nursery attendant on either Monday, May 19<sup>th</sup> at 6:00 PM or Tuesday, May 20<sup>th</sup> at 5:30 PM. Must choose one of the dates - call the church office with your choice.

### NEW MEMBERS CLASSES

Three Sundays: May 18, 25 and June 1 from 9:15 AM- 10:15 AM. New members will be received on June 1. If you know of someone who is interested in becoming a member of Hope Church, please have them call the church office at 610-767-7203.

---

### *Reflections on Dealing with Grief & Loss*

*by Pastor Paulette Obrecht*

*Hope Church is offering a grief support group so people have the opportunity to help one another through the grieving process. The group meets on Wednesdays, 7-8:30 pm – in the 6<sup>th</sup> grade SS room downstairs. It is available to people from Hope Church and from the community at large. Please contact Pastor Paulette (610-767-7203) to sign up for the group.*

Martha Whitmore Hickman, in her book *Healing after Loss: Daily Meditations for Working through Grief*, notes that after the loss of a loved one, almost all of us have some "unfinished business" with him or her. Maybe it's a hurt that was never resolved, questions we never got answers to, things we would like to have said but never did. It's so easy for us to brood over these things and to torture ourselves with "if only's" as we long to make things right. And, one thing we might do as we celebrate the resurrection of our Lord is to honor the possibility that whatever life exists beyond death, we can believe that it must be more compassionate, more understanding, more forgiving than we experience on our human plane. And, if this is so, then our loved one must be aware of our dilemma. So, we can hope that all our unresolved questions are able to be absorbed into the light of a higher Truth. We can gather our unresolved hurts and guilt and place them at the feet of the All-wise, the All-knowing, and know that it is enough. Alleluia. Amen.

### STEWARDSHIP CORNER - Isaiah 58:1-12

By Professor Cameron Howard

Isaiah 58 describes a people who want to encounter God. They desire to be faithful: "They delight to draw near to God" (v. 2). They carry out practices that are supposed to please God, and they cannot fathom why they still feel a spiritual distance from their Creator. The people's error lies in supposing that they can compartmentalize their encounters with God. They keep their lives of faith separate from their work, imagining that worship is something we do over here, and work is something we do over there. God does not encourage the people to restrict their spiritual practices; instead, God commands them to widen those practices. This



passage envisions orienting our whole lives—including our finances—toward our neighbor, in order that we might know the fullness of God’s presence.

Throughout Scripture, life is presented as an integrated whole, not a sum of parts. Worship is never fully separated from justice. In Leviticus 19, for example, commandments to leave the gleanings of your field for the poor and not to defraud your neighbor are uttered in the same breath as laws concerning sacrifices to the LORD. In Isaiah 58, the prophet reminds us to see every act as an act of worship. This passage challenges us particularly to remember that how we make money is as important as how we spend it. If we give generously to the church but exploit workers or God's creation as we do it, we have failed to worship in a way that is pleasing to God. If we show up every Sunday morning and Wednesday night, yet we ignore those in need we pass along the way, we have still failed to worship.

If we can meld together our workweek and our Sundays, our hiring and our fasting, our earning and our giving, all in support of our neighbor, then the prophet assures us that we will feel God's presence before us and behind us, in every part of life: "Your light shall break forth like the dawn" (v. 8). The prophet's vision here is not that we give to get rich, nor that we scratch God's back so that God will scratch ours. Instead, the prophet invokes metaphors of healing, light, and wholeness to describe spiritual health. To participate in the fast that God chooses is to receive that which we seek: nearness to God.

### SOCIAL MINISTRY

50 Special Easter goody bags were shared with the Gracedale residents of Floor D3 and our homebound members. This project was truly a congregational effort! Thanks to all of you who contributed toiletries and candies for the bags. And, thanks to the 3<sup>rd</sup> and 4<sup>th</sup> grade Sunday School classes who decorated the bags.

Our next project will be to offer a night of singing and fellowship for Gracedale residents on Monday, May 5. We will leave the church at 6:00 PM. Anyone interested in helping to bring residents to the activity room – or to provide music and singing – is asked to sign up on the Narthex Bulletin Board.

The Committee will meet again on Tuesday, May 20, at 11:00 AM. Anyone is welcome to attend, bring their ideas for service projects, and become involved.

### YOUTH GROUP

Mark your calendars for a bingo featuring Vera Bradley products on **Saturday, June 28** to benefit the youth attending the 2015 National Youth Gathering in Detroit! Doors will open at 11:00 AM and bingo will begin at 12 Noon. Tickets will be on sale beginning May 4<sup>th</sup> and will cost \$20 in advance and \$25 at the door for 20 games of bingo.



We are currently in search of sponsors (individuals or businesses) for our Vera Bradley products. There are four categories of sponsors so individuals do not need to sponsor an entire bag, but have the option of contributing towards one.

Platinum	\$76 and above	Silver	\$26 - \$50
Gold	\$51 - \$75	Bronze	\$1 - \$25

If you or anyone you know would be willing to be a sponsor for the bingo, please pick up a form at the back of the church. We will also have a Chinese Auction at the bingo and welcome any donations of baskets, gift certificates, or other items for that. Thank you in advance for making a difference in the lives of the young people of our church!

✓ **Youth Group Shore Trip** - Monday, July 14 - Thursday, July 17



### COFFEE WITH THE COUNCIL

Do you know all of our council members? Do you ever wish you had the chance to ask a question of them? Did you ever want someone to review a church financial statement with you? Do you have some constructive comments you would like to share? Well, your opportunity is here!

On Sunday, May 4<sup>th</sup> from 9:15 AM – 10:15 AM the council members will host “Coffee with the Council.” This is an occasion for church members to meet with the council, have financial reports reviewed, ask questions, share concerns and – of course – have coffee and goodies! Council members want to hear from you and create an opportunity for open communication outside an annual meeting format. So if you’ve been dying to learn or share something, please make time on May 4<sup>th</sup> to enjoy some coffee and conversation!



### BIKE FOR WORLD HUNGER

Bike, roller blade, walk or run! **Saturday, May 17<sup>th</sup> from 9:00 AM to 1:00 PM** at the Bob Rodale Cycling and Fitness Park in Trexlertown. Sign-up in the narthex. Participants will receive a registration packet from Pastor Paulette, including sponsor sheet.

---

### EVANGELISM

- **Thursday, May 1:** National Day of Prayer, led by Pastor Paulette. There will be a light luncheon following the service.
- **Sunday, June 8:** Confirmation. There will be a celebration after the 10:30 AM confirmation service to honor our newly confirmed students.
- **Sunday, July 20:** church family covered dish picnic at Indiantrail Park. Games, fun, for all ages!
- **Saturday, August 2:** annual Knoebel's Grove picnic

### HOMELESS MINISTRY TEAM AT HOPE

The newly-formed Homeless Ministry Team met on Sunday, April 27, at 9:15 AM in Kuntz Hall to begin planning their next project. Look for articles in the weekly Sunday bulletins for announcements about the next meeting. Anyone who is interested in helping the homeless population in our local communities is invited to become involved.

---

### VACATION BIBLE SCHOOL

**Attention all Secret Agents... coming July 7<sup>th</sup>-11<sup>th</sup> “International Spy Academy”.** Grab your briefcases, secret decoder rings, and spy glasses for Hope’s Vacation Bible School. Classes will be held from 9:00 AM until 12 Noon, with a closing program on Friday evening. Ages include 3 year olds (potty trained) to children completing 6<sup>th</sup> grade in June. Lots of help will be needed so please consider volunteering. A staff nursery is provided for younger children who are not old enough to attend. Needed this year for a craft is empty 20 ounce Gatorade bottles with lids. Registrations are now being accepted at [vbs.hopecherryville.org](http://vbs.hopecherryville.org). If you do not have computer access, there are paper forms available in the narthex.



## NATIONAL DAY OF PRAYER



On Thursday, May 1, at 11:00 AM, Hope Church will offer a worship service in observance of the National Day of Prayer, followed by a fellowship hour which will include a light lunch. A National Day of Prayer was first created by President Harry Truman as a time for people in the U.S. to turn to God in prayer and meditation at their houses of worship or in informal groups or as individuals. We all have things for which we can offer thanks to our God – and to turn over to God. Remember, prayer is not something that changes God, but it certainly can change us. Thanks be to God!

## WELCA

✓ **Tuesday, May 20:** WELCA Meeting 9:00 AM

---

## 2014 SPRING BASKET SOCIAL

The 16<sup>th</sup> Annual Spring Basket Social was held on Friday, April 11, 2014. **THANK YOU TO EVERYONE** who helped to make this evening a **HUGE SUCCESS!!!** The Northampton Area Food Bank thanks everyone who supported this fundraiser. Hope Church thanks everyone who supported this fundraiser, which helps the Pastors' Good Samaritan fund, which in turn helps members and/or persons in our community.



Ticket sponsors were LeAnn Chandler (in Honor of ALL Volunteers) and Loretta Weil & family (in Loving Memory of Harry Weil). Kudos to EACH ONE OF YOU who are not Committee Members, yet continue to help especially Boy Scouts & Leaders of Troop 242 who set up tables/chairs/baskets the evening prior to the Social and Catechetical Students who served as runners.

Following is the financial report from the 2014 Spring Theme Basket Social:

- Northampton Area Food Bank received \$3,162.35 (\$2,462.35 + \$700.00 matching funds from Thrivent Financial for Lutherans).
- Hope's Good Samaritan Fund received \$2,462.35
- \$284.75, amount raised at bake sale, sent to the Northampton Area Food Bank.

## **2014 FALL BASKET SOCIAL IS ON OCTOBER 10, 2014**

*Respectfully submitted by Kathy Fogle, Linda Sidor & the Basket Committee of Hope Lutheran Church*

---

## BEAR CREEK CAMP

You can register now for summer camp. Remember you qualify for discounts if you have Pastor Jami sign your registration form and an additional discount for a Bear Creek Ambassador (Kim Roth) attending the annual meeting. Please contact Kim Roth (610-820-0587) with any questions, for a registration form or for more information. Register online at [www.bearcreekcamp.org](http://www.bearcreekcamp.org).

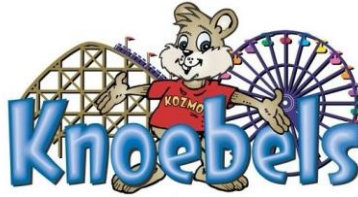
---

## SPRING CLEAN UP

Saturday May 17<sup>th</sup>  
8:00 AM – 12 Noon  
Bring Gloves

Focus on the outside of the property. Contact Earl Snyder with any questions.





**Saturday August 2<sup>nd</sup>, 2014**

**Pavilion reserved from 10:00 AM – 10:00 PM**

Lunch served at 2:00 PM

*burgers, hot dogs, salads, dessert, snacks and drinks*

**\$12.00 per person** – children 4 and under free

- free parking, free admission and free entertainment all day long
- handicapped accessible – stroller, wheelchair, scooter, & wagon rentals
- over 50 rides, including kiddie rides and 2 world-class wooden roller coasters! Numerous exhibits, a coal mine museum and much more!
- Make checks payable to **Hope Lutheran Church**

Questions? Call **John Zmyewski** 610-767-7260 or the church office 610-767-7203

### **HIGH SCHOOL AND COLLEGE GRADUATES**

Names from Hope's members of high school/college graduates will be included in our July/August issue of The Hope Home News. Please supply us with the following information and return it to the church office as soon as possible!

- STUDENT'S NAME
- GRADUATING FROM
- DEGREE EARNED
- FUTURE PLANS
- ADDRESS AS OF SEPT. 2014 (IF KNOWN)

### **LUTHERAN DAY AT THE CAPITOL**

There is still time to sign up for Lutheran Day at the Capitol sponsored by Lutheran Advocacy Ministry in PA (LAMPa). The keynote speaker will be Representative Dave Reed, the Chair of the House Majority Policy Committee in the PA House of Representatives. Participants will participate in legislative briefings, workshops, and a visit to the state Capitol to speak with local legislators. See Pastor Paulette to join with the group from several local congregations travelling to Harrisburg in the church van – or for further details.

### **HOPE LUTHERAN SCHOLARSHIP FUND**

Hope Church offers scholarship money to college students. The requirements of eligibility are:

1. Attending an accredited college/university full time
2. Will be entering second year (or higher) of college in fall of 2014
3. Is a member in good standing of Hope Lutheran Church, Cherryville, PA

Applications can be picked up from the church office or can be obtained by phoning 610-767-7203 or by writing to PO Box 1030, Cherryville, PA 18035. The deadline for applications to reach the church office is **July 20, 2014**. (Recipients of scholarship awards will be invited to be at either worship service on August 3<sup>rd</sup> to receive the first of two checks, the second of which will be **sent** the first week in January 2015.)

### LEHIGH TOWNSHIP HISTORICAL SOCIETY

**Sunday, May 4<sup>th</sup>:** Grand opening of the Lehigh Township Historical Centre Addition, Route 248, Pennsville from 1:00 to 4:00 PM. Tours, door prizes, light refreshments and a souvenir for visitors.

**Sunday, May 11<sup>th</sup>:** Open House from 1:00 to 4:00 PM. The museum will be open the second and fourth Sundays of each month through October.

**Saturday, May 17<sup>th</sup>:** take-out dinners will be made by Lorah's Roasters outside of the historical center from 1:00 to 5:00 PM. Tickets are available by contacting any LTHS member, by visiting the historical center on May 4 or May 11, or by calling 610-767-5989. Dinners consist of pork or chicken, a baked potato, coleslaw, roll and dessert and the cost is \$10.00.

### INDIANLAND GARDEN CLUB

The next meeting will be held on Tuesday, May 13, at 7:00 PM at Hope Church. Doors open at 6:00 PM. This is the annual plant auction and sale, open to the public. There will also be a raffle and light refreshments will be served. Bring a box for your purchases. For questions regarding the plant auction or the club, call 610-657-0864.

There are still a few seats available for the bus trip to Longwood Gardens on May 10 bus trip. If interested, contact 610-767-8420.

### GERANIUMS FOR PENTECOST

Geraniums will be placed near the altar on Pentecost Sunday, June 8, 2014, symbolizing the "fire" of that first Pentecost. Sponsors are needed (\$5.00 per sponsor) to help with the cost of purchasing these flowers. If you would like to remember a loved one or honor someone by being a sponsor, please turn in the form by Friday, May 30<sup>th</sup>. Money must accompany orders and should be placed in an envelope marked "Geraniums" and placed in the locked box in the narthex. ***CONFIRMATION PARENTS, WHAT A WONDERFUL WAY TO CELEBRATE YOUR CHILD'S SPECIAL DAY! WE WOULD LIKE ALL CONFIRMATION STUDENTS TO HAVE AT LEAST ONE FLOWER SPONSORED.***



### CAR WASH FOR A CAUSE

**Saturday May 3**

**9:00 AM – 2:00 PM**

Hope Lutheran Church, Cherryville

Featuring a Bake Sale

Cars: \$5 Trucks: \$10

Proceeds benefit the 2015 Youth Group National Gathering & Charity TBD

Donations of baked goods and soda / water as well as old towels, rags, sponges and scrub brushes cheerfully accepted.

### MEALS OF HOPE PROJECT

Saturday, June 14 – at Union Lutheran Church, Schnecksville – the Annual Synod Convention of the Women of the ELCA (WELCA), *all people* of the Synod are invited to work on an important project. During the afternoon of the Convention (from 1-4 pm), everyone will gather to help assemble the 10,000 meals for the "Meals of Hope project." Wouldn't it be great if *Hope Church* supported its WELCA group by sending several teams of 6-12 people to help assemble food packages to feed the hungry in our area? Teams with children 7 years and older age are welcome! Look for the sign-up sheet on the Narthex. Confirmation students – this is another outreach event – and a fun one – to attend! See Pastor Paulette or Judy Dieter for more details.

**WORSHIP SCHEDULE – MAY 2014**

<p><b><u>Sunday, May 4, 2014</u></b> 8:00 AM Holy Communion 9:15 AM Sunday School 10:30 AM Service of the Word</p>
<p><b><u>Sunday, May 11, 2014</u></b> <b><i>Mother's Day</i></b> 8:00 AM Service of the Word 9:15 AM Sunday School Mom &amp; Dad's Day Program 10:30 AM Holy Communion</p>
<p><b><u>Sunday, May 18, 2014</u></b> 8:00 AM Holy Communion 9:15 AM Sunday School 10:30 AM Service of the Word</p>
<p><b><u>Sunday, May 25, 2014</u></b> 8:00 AM Service of the Word 9:15 AM Sunday School 10:30 AM Holy Communion</p>

**HOPE CHURCH AND ELCA WORLD HUNGER**

Thank you to everyone who used Hope's Lenten Calendar to save coins and turned them in. So far, Hope has collected \$111.57 to ELCA World Hunger. Contributions will be accepted for another two weeks.

*Did you know? ...* Contributions to ELCA Good Gifts also contribute to ending the battle against world hunger. You might remember that last year Hope Church contributed \$310 to help purchase 310 chicks so villages around the world might feed themselves. Contributions of \$100 will feed 50 people at a soup kitchen. A contribution of \$10 will buy one mosquito net in the battle to combat malaria. And \$50 will purchase one goat. It's amazing how, when we all pool our resources, we can do so much to help people in the U.S. and around the world in the battle against hunger and extreme poverty. Please consider doing your part to change the lives of God's people in need.



Recently, I was selected to be part of a global mission team, heading to Punta Gorda, Belize, from July 12-20, 2014. Our mission is to share God's word through a vacation bible school type program with the children in an orphanage through the Laugh Out Loud Ministry. As a member of the mission team here at Hope, I feel blessed to be given this opportunity. Answering God's call to this mission challenges me to not only share my faith with others, but to grow spiritually as well. Each team member sent out prayer letters to seek 'prayer warriors', who would pray and support them and the mission. Would you, the congregation, please be my 'prayer warriors'? As you can imagine, this type of mission trip is quite costly; so I humbly ask for your financial support of this mission. Donations can be sent directly to Hope Community Church, 7974 Claussville Road, Fogelsville, PA 18051, with my name in the memo space. It is a privilege to be called to do mission work in the name of God, but it would not be possible without the prayers and support of the congregation here at Hope Church. Thank you in advance for your support. – Doris Zellers



## HOPE LUTHERAN CHURCH

4131 LEHIGH DRIVE | CHERRYVILLE PA 18035 | HOPECHERRYVILLE.ORG

### HOPE LEADERSHIP

#### STAFF

<p><b><u>PASTOR</u></b> The Rev. Jami Possinger <a href="mailto:pastor@hopecherryville.org">pastor@hopecherryville.org</a> 610-767-7203 ext. 12 610-799-2449 (h)</p>	<p><b><u>ASSISTANT PASTOR</u></b> The Rev. Paulette Obrecht <a href="mailto:assistant@hopecherryville.org">assistant@hopecherryville.org</a> 610-767-7203 ext. 13 610-837-9256 (h)</p>
<p><b><u>VISITATION PASTOR</u></b> The Rev. Jerry Mraz</p>	<p><b><u>PASTOR EMERITUS</u></b> The Rev. Clark W. Kuntz II</p>
<p><b><u>ADMINISTRATIVE MANAGER</u></b> Mrs. Jane Tretiak <a href="mailto:office@hopecherryville.org">office@hopecherryville.org</a> 610-767-7203</p>	<p><b><u>DIRECTOR OF MUSIC</u></b> Mr. David R. Ziegler <a href="mailto:organist@hopecherryville.org">organist@hopecherryville.org</a> 610-767-7203 ext.11</p>
<p><b><u>BELL CHOIR DIRECTOR</u></b> Mrs. Janet Filchner 610-767-7203 ext. 40</p>	<p><b><u>SEXTON</u></b> Mrs. Bonnie Zmyewski</p>
<p><b><u>TREASURER</u></b> Mrs. Trudy Mertz</p>	<p><b><u>FINANCIAL SECRETARY</u></b> Mrs. Deb Gardner</p>
<p><b><u>COMMUNICATIONS SPECIALIST</u></b> Nina Weiss <a href="mailto:communications@hopecherryville.org">communications@hopecherryville.org</a> 610-767-7203 ext. 20</p>	

### Congregational Council

Linda Mery <i>President</i>	Tim Lockard <i>Vice President</i>	Amy Nichols <i>Secretary</i>
Kasey Frey	Jim Gardner	Tim Moore
Al Rock	Tony Pagotto	Tom Patterson
Bruce Schnabel	Bob Small	John P. Zmyewski

### CONTACT INFORMATION

New membership,  
baptisms, funerals,  
weddings, change of  
address, van requests,  
memorial sponsors,  
hospital admissions,  
facility rentals

**Call the church office  
610-767-7203**

<b>REGARDING</b>	<b>CALL</b>	<b>PHONE. NO.</b>
Basket Cmte	Linda Sidor	610-767-8372
Boy Scouts	Mike Weber	570-905-6319
Church Website	Tom Perry	610-261-0743
Confirmation	Pastor Jami Pastor Paulette	610-767-7203
Cub Scouts	Emily Hassler	610-760-1547
Evangelism	Sharyn Kratzer	610-261-1277
Finance	Bob Small	610-428-3231
Girl Scouts	Karen Zimmerman	610-760-1887
Hope Fest	Wayne Weidner	610-767-1512
Memorial Garden	Barry Ritter	610-428-2320
Mentor Leaders	Trish Ninos	610-360-6034
Mutual Ministry	Charlie Kutzler	610-262-4588
Nursery School	Deb Gable	610-767-7523
Prayer Shawl	JoAnne Creyer	610-262-3204
Property	Earl Snyder	610-703-5166
SCS/Christian Ed	Michelle Hughes	484-547-4585
Social Ministry	Marge Zimmerman	610-217-8324
Stewardship	Wayne Weidner	610-767-1512
VBS	Kathy Ziegler	610-262-9197
WELCA	Judy Dieter	610-767-9170
Worship Arts	Pastor Jami	610-767-7203
Worship & Music	Janet Filchner	610-262-5215
Youth Group	Steph Ziegler Stacey Ziegler	610-262-9197
Senior Center	Diane Esch	610-767-2977
Tae Kwon Do	Rich Mullen	610-760-0958
Yard Sale	Ralph Fisher	610-392-4985

## Our Mission

STATEMENT  
STATEMENT  
STATEMENT  
STATEMENT

*To witness the love of God through both words and actions so that we may make others aware of God's claim on their lives and in doing so, seek to become more perfectly the Body of Christ in the world.*

