

# Hope *Home News*

4131 Lehigh Drive, P.O. Box 1030  
Cherryville, PA 18035  
610-767-7203

February 2020  
Vol. XLVII No. 2

[hopecherryville.org](http://hopecherryville.org)



## GREETINGS FROM THE PASTOR...

Lent is the six-week period leading up to Easter. It's one of the most important times of year. While Advent is a celebration and a time of great anticipation, Lent is more frequently seen as a time of solemn observance and preparation for the celebration of the death and resurrection of Jesus at Easter. Lent begins on Ash Wednesday, which is always held 46 days - 40 weekdays and 6 Sundays - before Easter Sunday.

From its start on Ash Wednesday until its conclusion on Easter Sunday, Lent has traditionally been a time for fasting or giving something up. Just as we carefully prepare for events in our personal lives – such as a wedding or birthday - Lent invites us to make our minds and hearts ready for remembering Jesus' life, death and resurrection.

What do Christians do during Lent? These days, Christians around the world observe Lent in many ways. Many from more orthodox and traditional denominations will still observe the fast strictly, beginning with the wearing of ashes on Ash Wednesday and including the abstinence of meat, fish, eggs and fats until Easter Sunday. Others will choose to give up just one item for Lent - more commonly a 'luxury' such as chocolate, meat or alcohol. It is also becoming increasingly common for people to give up other things in order to refocus their faith during this time - such as watching TV or refraining from using social media.

Many Christians also use Lent to study their Bibles and pray more intensively, making use of the many devotional books and courses now available in print and online to enhance our Lenten experience. And more and more Christians are turning to the "40-acts challenge" as a way of doing Lent differently - using simple daily reflections and acts of generosity as a way of putting others first during preparations for Easter.

Here at Hope we offer Mid-week Lenten Services each Wednesday during Lent at both 11:00 a.m. and 7:00 p.m. These services offer an opportunity for members and guests to gather for worship and instruction – a dedicated time to be with others and with God while, at the same time, learning something new. This year during both the morning and evening services our theme will be **A Fresh Look at Stories from the Old Testament.**

Why the Old Testament you might ask? Honestly – because many of us shy away from trying to tackle the Old Testament. It is long and can be a bit boring and doesn't include any stories about Jesus. But it is relevant nonetheless. So ... this year I thought we could take some stories from the Old Testament that most of us will know and get a fresh look at why they have meaning for our lives today. Over the course of the five mid-week services after Ash Wednesday we will cover:

- Origin Stories from Genesis –  
How did we get here and why are we here?
- Putting the Genie Back in the Bottle –  
Innocence and Disobedience
- Why Did You Bring Us Out of Egypt? –  
The story of the Whiners and the Wailers
- The "Seeing" Eye –  
Have you ever been misled by appearances?
- The Story of Joseph –  
What happens when you dare to be different?

Please take time out of your busy lives to sit in the presence of God, worship with all your heart and dig into God's word for a spiritual uplift – AND maybe learn something new.

Blessings,  
Pastor Jami

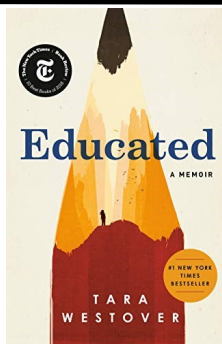
## Council Highlights – January 2020

- ◆ Council has scheduled an educational workshop for members who are interested in learning more about how to respond in an active shooter emergency. Titled CRASE – Civilian Response to an Active Shooter Event, Sgt. Mirabile from Lehigh Township Police Department will lead this workshop in the sanctuary on Sunday, February 23 at 9:15 a.m. All members and other interested people are invited to attend.
- ◆ Youth Group Valentine Dinner tickets will be on sale in the narthex after services on January 19 and 26 and February 2 and 9. Look to the bulletin and newsletter for more information.
- ◆ The Youth Group will be selling Easter Candy again this year – but a bit differently. No pre-orders will be taken. Candy will be available for sale on Sunday, March 29 and April 5 after services in the narthex. It will be first come – first served.
- ◆ Youth Group has scheduled a clothing drive for the week of March 1 through March 6. Clothing can be dropped off anytime during the week and placed in the POD in the parking lot. Evening drop-offs will have the advantage of youth group members assisting to unload cars.
- ◆ Vacation Bible School Team is meeting and getting ready for VBS 2020. The theme this year is Knights of North Castle where children will grow strong in the Lord and in the strength of God's power by exploring how we put on the armor of God. VBS is scheduled for the week of July 6 through July 10 from 9:00 a.m. to 12:00 p.m. Look for registration in the newsletter and future bulletins.
- ◆ Council is researching ideas to make the sanctuary safer during worship. They are looking into “panic” buttons to alert the police of an emergency and increase response time and internal and external cameras.
- ◆ Council reviewed all comments and suggestions from the January 12 Coffee with the Council event and referred them to the appropriate committees.

## Book Buddies Book Club

Book Buddies is Hope’s newest small group and we recently met to discuss our first book, **Inspired** by Rachel Held Evans. We have selected our second read which is **Educated: A Memoir** by Tara Westover. This is an unforgettable memoir about a young girl who, kept out of school, leaves her survivalist family and goes on to earn a PhD from Cambridge University. Born to survivalists in the mountains of Idaho, Tara Westover was seventeen the first time she set foot in a classroom. Her family was so isolated from mainstream society that there was no one to ensure the children received an education, and no one to intervene when one of Tara’s older brothers became violent. When another brother got himself into college, Tara decided to try a new kind of life. Her quest for knowledge transformed her, taking her over oceans and across continents, to Harvard and to Cambridge University. Only then would she wonder if she’d traveled too far, if there was still a way home.

We would invite anyone who is interested to either order the book through Pastor Jami or on your own. The cost of the book is \$15. A sign-up list is on the bulletin board. We read the entire book and then meet for a lively discussion. The next Book Buddies meeting will be on Tuesday, March 3 at 1:00 p.m. or 7:00 p.m. – you choose the time that works for you. Hope to see you there.



## WORSHIP SCHEDULE

### Sunday, February 2

#### SOUPER BOWL SUNDAY

8:00 AM Holy Communion  
9:15 AM Sunday School  
10:30 AM Service of the Word

### Sunday, February 9

8:00 AM Service of the Word  
9:15 AM Sunday School  
10:30 AM Holy Communion

### Sunday, February 16

8:00 AM Holy Communion  
9:15 AM Sunday School  
10:30 AM Service of the Word

### Sunday, February 23

8:00 AM Service of the Word  
9:15 AM Sunday School  
10:30 AM Holy Communion

### Wednesday, February 26

#### ASH WEDNESDAY

11:00 AM Service  
7:00 PM Service



**February 21**

**Meet at 6:00 p.m.**

Cost will be around \$20 (watch for updates.)

All youth are welcome

Please sign-up on the

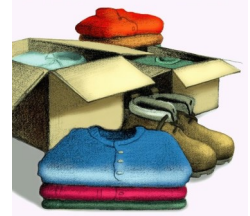
Youth Bulletin Board.

## Clothing Drive

**March 1—6**

Start clearing out those closets.

Watch for more information about drop off procedures.



## SUNDAY SCHOOL

### \* February 23

Cradle roll thru 6th grade will meet in Kuntz Hall. Pick up will be in their respective classrooms at 10:30.

### \* Sunday School Family Easter Party; April 5

9:15 a.m. in Kuntz Hall

Students will then participate in the Palm Sunday Procession of Palms at the 10:30 worship service.

## CONFIRMATION

Greetings Confirmation Students, Parents, and Mentors,

I would first like to thank our recently inducted Mentors for our Level 1 Confirmation Students. Thank you for your commitment to your mentee and the confirmation program at Hope! We look forward to working with you and your student over the course of the next year and a half.

Confirmation classes are going well, and the students even survived their first test at the end of 2019! Level 1 is learning about characters in the old testament such as Samson, Ruth, and Solomon this month. Level 2 just finished performing group skits about different Parables. They are moving on to learn about Acts and Saul/Paul.

Don't forget to keep track of your attendance to Sunday School and Worship Services. You need to make sure you have 25 by the end of the Sunday School Year. Remember Ash Wednesday is on February 26 and all mid-week Lent Services count toward this requirement. Be sure to fill out a worship worksheet whenever you attend a service in order to receive credit. A question came up this week that I would like to clarify for everyone in Level 2. The Weekend Retreat on 5/8-10, and the Parent/Student Conversation Event on 5/17 are Mandatory Confirmation events and **DO NOT** count for Sunday School credit.

The level 1 Mentor program started on Saturday January 25 with a Welcome Brunch. Their next event will be Game night on Saturday February 29 from 5-7 p.m. Level 2 will also have a Game Night on Saturday February 29 from 7-9 p.m. In case of inclement weather, the snow date for both of these events is Saturday March 14. Please make sure you see me if you miss an event so that I can get you the make-up work for that event, it is your responsibility.

Blessings,

Laura Hafner

Confirmation Coordinator



A "noisy" offering (collected in pots) at both services.

Save up those coins to make the pots ring out!

Benefits the Food Bank.

## IS THERE CHURCH?

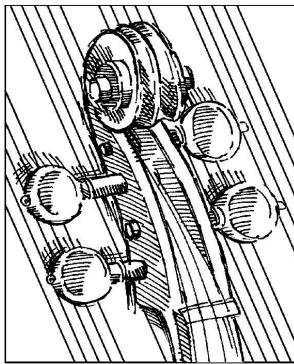
Find out by tuning into WFMZ T.V. or check their website. You can also check our website at [www.hopecherryville.org](http://www.hopecherryville.org).



## **Easter Orchestra** is now forming.

Rehearsal dates, times and sign up information for all our events can be found on the orchestra page on our church's website at:

[orchestra.hopecherryville.org](http://orchestra.hopecherryville.org)



## **Musicians wanted for special projects.**

If you play bass guitar, banjo, or drums and are interested in playing for special events, please contact David Ziegler for more information.

## **ELECTRONIC GIVING**

---

Just as you rely upon receiving income on a regular basis, Hope Lutheran relies on your regular contributions. We appreciate the efforts of the congregation members to make consistent offerings throughout the year—especially during inclement weather conditions or during popular winter travel periods. To assist you, we provide a convenient electronic giving option for setting up recurring contributions. Visit the church website at [www.hopecherryville.org](http://www.hopecherryville.org) and locate the Online Giving page.

Online Giving

## **COMMITMENT UPDATE**

---

As of January 15, 2020, we received 130 Estimate of Giving Cards totaling \$240,166.00. This number includes 36 new commitments to our ministry. Our 2020 budget is \$440,834. The amount we have received on the Estimate of Giving Cards for 2020 represents about half of the 2020 budget. In 2019 we received a total of 131 Estimate of Giving Cards totaling \$241,549.00 which means the difference between 2019 and 2020 commitments (to date) is \$1,383.00. It is not too late to return your Estimate of Giving Card. There is a box in the narthex to deposit your completed card. Extra cards are available there as well. Thank you to all who responded so far.

## **TEEN DATING VIOLENCE AWARENESS MONTH**

---

February is TEEN DATING VIOLENCE AWARENESS MONTH, a national effort in the United States to raise awareness about abuse in teen and 20 - something relationships and promoting programs that prevent it. Because everyone deserves a safe and healthy relationship.

### **DID YOU KNOW:**

- ◇ Girls and young women between the ages of 16 and 24 experience the highest rate of intimate partner violence - almost triple the national average.
- ◇ 89% of college students reported that they are not confident in their ability to recognize the signs of dating abuse.
- ◇ 1 in 3 teens in the U.S. will experience physical, sexual or emotional abuse by someone they are in a relationship with before they become adults.
- ◇ Only 33% of teens who were in a violent relationship ever told anyone about the abuse.
- ◇ Empowering teen girls is a crucial part of the battle against relationship violence. Changing abusive behavior is a long and challenging process that you cannot do alone.

See the Bulletin Board for more information.

## **WITH THANKS . . .** (you can see these notes on the bulletin board)

---

Thank you for the prayers shawl I received from the Church. The color grey is my college color and it matches very well.

Thanks,  
Ashley Hildebrand

Dear Hope Lutheran Church,

Thank you for the scholarship. I used it to help pay for books, which helped a lot. I am really enjoying marine biology in my sophomore year, thanks for your continued support.

Sincerely,  
Katerina Sawickij

Dear Members of Hope Lutheran Church,

I am so thankful to have received the two scholarship fund checks for the past two semesters. I am currently a sophomore at Duquesne University hoping to be accepted into the pharmacy program. I am honored to have been accepted to receive the scholarship and it has helped me tremendously! Knowing that the church is thinking about its younger members means so much.

Best,  
Carlie Small

To whom it may concern,

Thank you so much.  
The adopted family (from George Wolf School)

Church Council and all members of Hope,

Thank you so much for your Christmas wishes, it keeps me going.

I will always strive to get better at caring for this House.

Thanks,  
Lance

Dear Church Council,

I wanted to thank you for the monetary gift you gave me at Christmas! It's really appreciated. Looking forward to another year being your financial secretary.

Deb Gardner

Council and Hope Members,

Many thanks for the generous Christmas bonus. I used it to support the Clinical Pastoral Education Pro-

gram at Phoebe Ministries. This will help a student through a CPE scholarship. It went to great use!

Blessings,  
Pastor Jami

Council Members,

Thank you so much for the generous Christmas gift. It is an honor and privilege serving as your Treasurer. I have been very blessed with the kindness and support from the staff and members of Hope throughout the years.

Thank you and blessings to everyone in the New Year.

Trudy

Dear Hope Lutheran Church,

Thank you so much for the monetary Christmas gift, it was truly appreciated. Also, thank you for the support and trust you have given this past year as I took over the Youth Ministries Coordinator position. I look forward to continuing to work for you and our youth.

Always,  
Ally Lockard

Church Council and members of Hope,

Thank you for the generous Christmas gift. It is hard to believe another year has gone by, a year that was filled with wonderful people and experiences here at Hope.

Blessings to you all in 2020!

Laurie Christman

Dear Congregational Council,

Thank you very much for the cash Christmas gift. It is greatly appreciated and will be reinvested into the music program at Hope. It is a pleasure to be in your employ and that of the Lord's at the same time. Of course, the congregational support every Sunday is Priceless. Imagine full organ, brass, and timpani playing the hymns with no singing. I can't. It is unimaginable. Keep up the good singing. I'll keep up the best playing, organizing and directing the Lord permits.

Thank you,  
David Ziegler



**MINISTRY AT  
ST. STEPHEN'S OUTREACH CENTER**

Wednesday, February 19  
Depart at 2:30 p.m.

**WELCA**

Tuesday, February 18  
at 9:00 a.m.  
in the Adult Sunday  
School Room



Monday, February 17  
7:00 – 9:00 p.m. in Kuntz Hall

**SOUP GROUP AND  
DELIVERY**



Wednesday,  
February 5  
9:00 a.m.  
in Kuntz Hall kitchen.

**PRAYER SHAWL MINISTRY**

Thursday,  
February 13  
10:00 a.m.



**STORYWEAVERS  
and lunch**

Tuesday, February 11  
10:00 a.m.  
For more information call  
LeeAnn Chandler, 610-440-0341

**CENTERING PRAYER GROUP**

Centering Prayer group will meet February 3  
and 17; the first and third Monday. We will gather  
at 6:00 p.m. in the Sunday School Room off  
Hanson Hall. Newcomers are always welcome!



**EVANGELISM COMMITTEE  
MEETING**

Thursday, February 6  
6:30 p.m. (*note time change*)

**WORSHIP SERVICE AT  
RENAISSANCE  
ASSISTED LIVING**

10:00 a.m.  
Anyone wishing to join us in providing a  
worship service to the residents is welcome.  
Evangelism Committee

**NURSERY SCHOOL**

Is accepting registrations  
for the next school term.  
Please contact Deb Gable at  
610-767-7523 for more information  
on enrollment.

**Boy Scout Sunday**

February 9  
8:00 a.m. Service



**LIHEAP**

If you need help paying your heating bills, or have a  
heating emergency LIHEAP (*Low-Income Home Energy As-  
sistance Program*) may be able to help you. You can find a  
brochure and application on the rack in the Narthex.

## HOPE'S HELPING HANDS

---

Keep your eyes out at the end of February for Helping Hands members who will be selling **crab patties** and **lobster bisque** after church services. Delivery of the crab patties will be in mid-March. Watch your bulletins and announcements for further details. Time to stock up on these delicious items as they will not be sold again until October.

*Saturday, February 15*  
(snow date February 16)



\$15 for adult \$8 for junior, \$3 for child.

Options are:

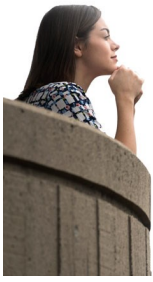
Prime rib, Chicken Oscar,  
Chicken Marsala or vegetable lasagna.

The child meal is hot dog with mac and  
cheese.

Get your tickets February 9 after both services or by calling  
the church office (610-767-7203)

## WOMEN OF FAITH

---



Beginning on Ash Wednesday, February 26, the Women of Faith ask you to join them in adding pieces of material to their prayer wall. It will be located in the narthex. Just take pieces of material (as many and as often as you like) and add it to the wall. Add your prayers with the corresponding color and pray for Thanks & Praise, Forgiveness, Strength & Healing, and Peace. We will keep the prayer wall up through Lent ... so keep adding those prayers! Make it a part of your Lenten journey this year!

## CIVILIAN RESPONSE TO ACTIVE SHOOTER EVENT

---

February 23 at 9:15 a.m., Sgt. Marabile of the Lehigh Township Police Department will present to the congregation a short course called CRASE. He will provide training that teaches individuals what can be done if you are in an area where an active shooting event occurs. It covers ways for you to be vigilant and more aware of your surroundings, as well as methods to protect yourself. Anyone interested in the program, please sign-up on the sheet located on the narthex bulletin board.

### WITH THANKS

*(Continued from page 5)*

I want to thank the church for providing the college scholarships over the course of my education. It has provided books, supplies and now gas during my last semester while I am student teaching in Reading. Thank you for the continuous support through all these years. I cannot wait to start my career in teaching. It is a joy to be part of this amazing family of Hope!  
Shelby Ziegler



MARK YOUR CALENDARS

VBS 2020

July 6—July 10

**KNIGHTS OF  
NORTH CASTLE**

Where children grow strong in the Lord and in the strength of God's power by exploring how we put on the armor of God



## NORTHAMPTON AREA FOOD BANK

---

Each month a different church group is responsible for providing volunteers to work at the Northampton Area Food Bank and **March** is Hope Lutheran Church month at the food bank. Assistance is needed in unloading the food from the truck delivery by Second Harvest on the first Monday of the month, packing of food items on the 1<sup>st</sup>, 2<sup>nd</sup>, 3<sup>rd</sup> and 4<sup>th</sup> Wednesdays of the month and the 2<sup>nd</sup> and 3<sup>rd</sup> Fridays of the month, and distribution of the food during the evenings on the 1<sup>st</sup>, 2<sup>nd</sup>, 3<sup>rd</sup> and 4<sup>th</sup> Thursdays of the month and the 2<sup>nd</sup> and 3<sup>rd</sup> **Saturday** mornings of the month. Please see the sign-up sheet located on the bulletin board for specific dates and times. We need at least 4 to 5 volunteers for every time slot. Please do your part to help with this very important community outreach activity. Hope Church has always been very supportive of the work done at the food bank thru both food donations and on-site volunteer hours. Several of our church members are there on a regular basis every month so come join us! Any questions, please contact Leslie Daniel at 610-216-1340.

In addition, the food bank is in need of a few staple items including: bottled fruit juice, canned tomato sauce and canned potatoes, peanut butter, jelly, boxed dry pasta, spaghetti and cereal. These items can be placed in the food bank wagon in the hall and will be taken to the food bank for distribution.

Also, please note that the Food Bank **DOES NOT** accept clothing items any longer. **Please do NOT put any used clothing items in the food bank wagon.**

### Retirement Luncheon

## BISHOP SAMUEL ZEISER



Sunday, May 17

2:00 p.m. to 4:30 p.m.

Northampton Banquet & Event Center  
1601 Laubach Ave., Northampton

Adult: \$30; children (age 12 & under): \$28

Family style dinner: salad, chicken and ham, mashed potatoes, filling, two vegetables, roll, beverage, and cake.

Limited number of tickets available

Reserve your spot now!

Payment is due by March 31

Sign up sheet is on bulletin board in the narthex or call the church office.

**FINANCIAL SUMMARY - DECEMBER 31, 2019**

	Regular	Building	Memorial	Scholarship	Memorial Garden
Balance Beginning of Year	\$102,873.22	\$146,144.08	\$139,489.65	\$ 95,612.84	\$ (4,061.92)
Income - December	58,144.96	3,911.87	1,408.91	1,134.22	-
Income - Jan.-Nov.	359,398.29	44,622.55	8,906.50	3,891.43	2,000.00
<b>Total Income</b>	<b>417,543.25</b>	<b>48,534.42</b>	<b>10,315.41</b>	<b>5,025.65</b>	<b>2,000.00</b>
Expenses - December	30,772.85	128.47	7.47	-	-
Expenses - Jan.-Nov.	329,979.31	48,343.18	6,447.78	5,400.00	-
<b>Total Expenses</b>	<b>360,752.16</b>	<b>48,471.65</b>	<b>6,455.25</b>	<b>5,400.00</b>	<b>-</b>
Net Income	56,791.09	62.77	3,860.16	(374.35)	2,000.00
Net Special Appeals	1,834.77				
<b>Balance End of December</b>	<b>\$161,499.08</b>	<b>\$146,206.85</b>	<b>\$143,349.81</b>	<b>\$ 95,238.49</b>	<b>\$ (2,061.92)</b>

**SUMMARY:**

Income exceeded expenses in the Regular Fund for the month of December by \$27,372.11, and for the year 2019, income exceeded expenses by \$56,791.09, giving us a current balance in the Regular Fund of \$161,499.08. Last year the net income for the same period was \$10,381.67 with a balance of \$102,873.22.

*\*\* The current income statement is posted in the narthex. \*\**

**NEWSLETTER SCHEDULE**

All committees, groups and persons submitting content for the church newsletter should follow the schedule listed below. Articles may be edited so we do not exceed Post Office guidelines. Please email your articles to Laurie Christman ([communications@hopecherryville.org](mailto:communications@hopecherryville.org)). Thank you.

<u>Edition</u>	<u>Article Deadline</u>	<u>Collation Date</u>
March	Tuesday, February 18	Thursday, February 27 @ 10:00 AM

*Please let the office know if you need to update your delivery method of the Hope Home News. The paper copy contains the news that fits on six pages. The digital version generally runs longer.*

**SYNOD NEWS**

The February 2020 issue of *Synod News* is available online.  
Visit <http://nepasynod.org/documents/synod-news/synod-news-2020-2.pdf>

**HOSPITAL CODE FOR HOPE LUTHERAN CHURCH CHERRYVILLE: 251**

